

Welcome to School Year 2024-2025!

Welcome back, everyone! We hope you made time to enjoy your summer with family and friends! The summer months are always a good time to recover from a long school year, catch up on tasks at home that may have been neglected throughout the year and reflect on how the past school year went. At Synergy Food Sales, the work never stops as we are always trying to be a better asset for YOU! This summer was no exception! For the first time ever, Synergy Food Sales stepped out of our comfort zone (MO, KS, parts of IL), hired Gary Bornmueller, and began doing business in IA and NE! In addition, we have now represent several manufacturers in the entire state of Illinois! As for Gary, he has been a cornerstone in the IA and NE markets for 20+ years and we are very lucky to have him on our team! Synergy Food Sales also brought 3 new manufactures into our family (these can be found in the body of this newsletter), and joined forces with Burlis Lawson & their K-12 representative, Tanya Sieber. This combination will be on full display at several upcoming shows!

Within Issue No. 23 of the Synergy Newsletter, you will find several new featured products with updates from each of our 24 manufacturers along with the “State of the State” portion of our newsletter that includes updates from two contributing State Agencies. Near the end of this publication, you will be introduced to three important individuals in our “Meet the Director, Manufacturer and State” . Don’t forget to review our “Brain Quiz” contest at the end of this edition. Submitting the correct answers will provide you with a chance to be a winner of one of seven Target gift cards, courtesy of our Issue No. 23 featured manufacturer, Apple & Eve!

Thanks for your continued support and we appreciate YOU!

The Synergy Team,

**Tom Hoenig, John Pickert, Andy Dudenhoeffer,
Gary Bornmueller, Kristine Bridgeman & Kim Lopez**



Above: Tom, and Andy pose with the famous SNA - Annual National Conference sign while attending ANC in Boston.

Events and Important Dates

- Friday, September 13th

Heart Of America Lunch & Learn 1

- Wednesday, October 2nd

Kohl Wholesale Food Show

- Thursday, October 3rd

Nebraska Commodity Food Show

- October 14th-18th

National School Lunch Week

- Wednesday, October 16th

Boss's Day

- Thursday, October 17th

SFNDA 1st General Meeting

- Thursday, October 31st

Halloween

- Saturday, November 2nd

Missouri SNA Food Show

- Tuesday, November 5th

Election Day

- Friday, November 15th

Heart of America Lunch & Learn 2

- Monday, November 11th

Veteran's Day

- Thursday, November 28th

Thanksgiving Day

- Friday, November 29th

Black Friday

- Thursday, December 12th

SFNDA 2nd General Meeting

- Wednesday December 25th

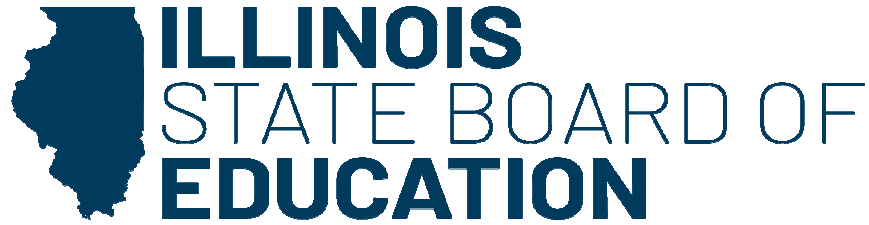
Christmas Day

- Sunday, December 31st

New Years Eve



State Updates—Illinois



Illinois State Board of Education Food Distribution Program

The final PAL Factor for school year 2024-25 was released by USDA in July and is \$0.45, which is an increase from the estimated PAL factor used during Illinois' Annual Order Period. As a result, beginning PAL balances in the Illinois Commodity System (ICS) have been updated. **Please spend your additional funds on USDA Foods and/or DOD Fresh.**

Also for school year 2024-25, schools will be responsible for paying the delivery costs associated with USDA Foods. The rates are included below. Lanter Distributing will invoice schools directly and schools must pay Lanter directly.

Lanter plans to email the invoices to the schools. Delivery Site Contacts will be the primary recipient of the emailed invoices. Please be sure to update Delivery Site Contact information, if needed, in ICS.

Description	Price
Delivery	\$7.04 per case
Custom Delivery	\$0.79 per case
Refusal/Backhaul	\$7.04 + \$3.52 = \$10.56 per case

ISBE will continue to pay the handling and storage costs associated with USDA Foods, but ISBE no longer has sufficient funds to pay the delivery costs up front. There is a possibility that ISBE will rebate schools a portion of the delivery costs, once the school year is complete, but we will not know if this is possible until year end. Please contact the FDP team at fdp@isbe.net or 217-782-2491 with questions.



State Updates — Missouri

USDA Foods Update

As we begin the 24/25 school year, we would like to provide you with some USDA Foods updates and a link to our USDA Foods webpage where you can access all the information below, processor contact information, and much more.

[USDA Foods | Missouri Department of Elementary and Secondary Education \(mo.gov\)](#)

Value Letter for 23/24 SY and Entitlement Estimation Letter for 24/25 SY

The USDA Foods Team has completed and posted the Value Letter for 23/24 on the USDA webpage. This report reflects the entitlement provided to each district categorized by commodity product for each processing option --Direct Delivery, Processed (NOI and FFS) and DOD. These Value Letters were sent to the Authorized Representative and Food Service Director for each LEA and are available on our USDA Foods webpage. <https://dese.mo.gov/media/file/value-usda-foods-distributed-2023-24-value-letter>

The NSLP Meal Rate for the 24/25 SY has now been published in the Federal Register and Entitlement Estimations Letters completed for Missouri school districts. These letters were sent to the Authorized Representative and Food Service Director for each LEA and are available on our USDA Foods webpage. <https://dese.mo.gov/media/105051/download>

Fair Share Bonus Fresh Apples – 110151 Various Varieties, 37-40# case, 125 servings

While some of you selected bonus apples on your 24/25 USDA Foods Packet, many more of you missed this opportunity. To provide free fresh apples to all our districts, we have elected to provide each with a “Fair Share” based on your “total lunches served in 23/24 SY” and your district enrollment. These cases will automatically be included on your September Gold Star warehouse delivery. There’s nothing you need to do but menu and enjoy them.

Commodity Warehouse Bid Awarded – Gold Star was the successful bidder and was awarded our State Warehouse Contract for the 24/25 SY with the opportunity for four additional renewals. We will continue many of the warehousing and delivery procedures we had in place last school year. Below is a review of those procedures as well as a few changes we are implementing.

Commodity Deliveries for 24/25 SY – In order to receive a commodity delivery, each school district must have a Gold Star Online Account and must “order” the items they requested on their USDA Foods Packet using that Gold Star Ordering feature. Each district’s monthly order must be placed by the Tuesday prior to your delivery week. Items may be added to your initial order until 2 days prior to your scheduled delivery date by reaching out to your Gold Star Account Specialist.

New this year, both Direct Delivery (brown box) and Fee For Service cheeses (sliced, sticks and shredded) will be automatically shipped to districts in the month requested on the USDA Foods Packet.

Fee For Service items that are not selected and delivered in the month requested on the USDA Foods Packet, will be automatically shipped to your district the following month.

Direct Delivery (Brown Box) foods should be selected for delivery in the month requested on the USDA Foods Packet. DESE and Gold Star are working on a process that will identify Direct Delivery items that have not been placed on order according to the packet and may force ship those items to encourage timely usage of commodity foods.

Cancelled and Adjusted USDA Foods - This listing is updated for the 24/25 SY. Please reference this as you place your Gold Star Commodity Orders. [Canceled and Adjusted USDA Food, Direct Delivery \(Brown Box\) Orders | Missouri Department of Elementary and Secondary Education \(mo.gov\)](#)

State Updates — Missouri Continued...

Missouri USDA Foods Update

Bonus Entitlement Available for 24/25 SY

Bonus food are items that do not draw down the entitlement that you received when you completed the annual USDA Foods Packet. They are additional foods available to all LEAs that participate in the commodity foods program on a first come, first serve basis. We are offering 3 Bonus opportunities this school year.

Direct Delivery (Brown Box)- We have excess amounts of some of the most popular direct delivery items and will be offering them at different times throughout the school year. School districts may request these bonus foods using an advertisement feature on the Gold Star website.

Gold Star Advertisement Feature – When logged into your Gold Star account, the blue bar on the left side of the screen has a heading called USDA Direct Delivery. Underneath it is the “Advertisements” link where all Bonus foods available can be viewed and requested. District can also use this feature to offer other districts any direct delivery items they cannot use this school year that are still in their Gold Star Live account. Fee For Service items cannot be offered. If items are not requested by another district, the district offering them will be responsible to accept delivery of the products. Complete instructions are included on the USDA Foods website under *Gold Star Training Videos - Advertisements*.

Please request only the amount of bonus direct delivery items that can be immediately accepted and stored. Once bonus requests are approved, they will be moved into each district’s Gold Star Live account. Bonus foods must be included a on a district’s next Gold Star delivery.

DOD Fresh – We have limited DOD Bonus available this year to offer LEA’s. Those that processed DOD Fresh may request additional bonus dollars be added to your accounts when you have depleted what was processed. Also, LEA’s that did not process DOD Fresh may request bonus dollars that we will provide if bonus is available. Please note, that because funds are limited, we will offer them in smaller increments and ask that districts come back for more as they have used their current allocations. To request Bonus DOD Fresh, please reach out to our DESE Donated Foods Team – donatedfoods@dese.mo.gov.

Net Off Invoice - To utilize this bonus option, you must have a commercial distributor that pounds can be designated to and who will provide the items requested by the LEA. LEAs that are processing via Net Off Invoice may request additional bonus pounds as available – availability will vary by processor. We will also allow LEAs to request bonus pounds from processors you did not select on your packet if bonus pounds are available. Competitive procurement will be required. To request bonus NOI please reach out to the processor you are interested in. They will be able to provide bonus pounds if they are available.

Please take advantage of these Bonus commodities and remember that they provide an opportunity to recover lost entitlement if Direct Delivery (Brown Box) items are cancelled.



Meet the New Manufacturer NO. 1

Apple & Eve offers a nice lineup of 100% juice products for K-12 breakfast, lunch and after school snack programs as well as for field trips and other school events. Trusted by parents since 1982,

Apple & Eve juice boxes are a staple of children's lunches and snacks. The all-natural juices are available in a wide variety of delicious flavors that are all fortified with calcium. Currently,

Apple & Eve offers these great tasting and healthy beverages in 4.23 oz. juice boxes.



1. **125 ML (4.23 oz) Juice Box with Straw –**

- No added sugar.
 - Excellent source of Vitamin C.
 - No refrigeration required.
 - Credits as ½ cup fruit serving at breakfast, lunch or after school snack.
 - Offered in Apple Juice, Fruit Punch, Orange Tangerine, and Strawberry Kiwi, and Gold Rush (Credit ½ cup Red/Orange vegetable)
 - 1-year ambient shelf-life
 - 40 units per case
- 140 cases per pallet

The Switch is a part of the Apple & Eve family and very well known across all markets. This popular beverage is so well known that it is now the #1 shelf stable juice in schools nationwide! The Switch advertises saying "100% of what you want and 0% of what you don't".



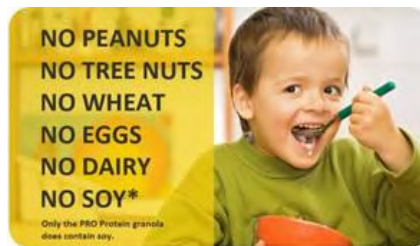
This great tasting alternative to sodas and sports drinks offers a healthy profit to any ala carte program! These sparkling 100% 7.5 oz. Juice drinks are offered in the following flavors:

1. **Kiwi Berry**
2. **Fruit Punch**
3. **Orange Tangerine**
4. **Watermelon Strawberry**
5. **Black Cherry**

Meet the New Manufacturers NO. 2

Rockin'ola is an allergen-friendly manufacturer that specializes in categories such as granola, trail mixes, and bean dips. Based in Columbus, OH, Founder and President, Marianne Sargent had a vision to create an incredibly tasty product that kids would love AND be whole grain! Rockin'ola agrees that healthy eating habits are important to establish early in life. Kids are typically exposed to "not so nutritious" options for snacking, and Rockin'ola knows the importance of having wholesome healthful snack choices available that they will enjoy! Rockin'ola is now served in schools nationwide, and kids LOVE it! These wonderful products exceed the School Nutrition Requirements and are compliant to be a Smart Snack.

Marianne says it best when saying, "Rockin'ola Granola was tested, and APPROVED, by students. And, even though Rockin'ola was developed originally for kids, adults are crazy about it, TOO!"



These wonderful

- ✦ NO peanuts
- ✦ NO tree nuts
- ✦ NO wheat
- ✦ NO eggs
- ✦ NO dairy
- ✦ NO soy

products are Allergen-Friendly:

ROCKIN'OLA

Features & Benefits:

1. Currently there are 12 IW Rockin'ola granola products – with the flavors of chocolate, strawberry, cinnamon, espresso, chocolate w/ mini marshmallows, strawberry w/ mini marshmallows, protein granola, sun berry trailmix.
2. They do offer bulk options.
3. These products do meet all SNLP guidelines.
4. These products are Smart Snack compliant.
5. 1oz. and 2oz. IW pack sizes available.
6. Direct shipment is available (5 pallet minimum – 3 week lead time)
7. Available through DOT.



Rockin'ola also offers an bean dip and IW corn crunch snacks (Kettle Snack, Buffalo Ranch and Diablo flavors)

Meet the New Manufacturers NO. 3



Since 1995, Country Pure Foods is one of the largest suppliers of portioned and multi-serve juices, plant-based beverages, and frozen novelties. For nearly 30 years Country Pure Foods has helped their customers with numerous beverage and frozen novelty solutions across various channels in foodservice, retail and co-pack markets.

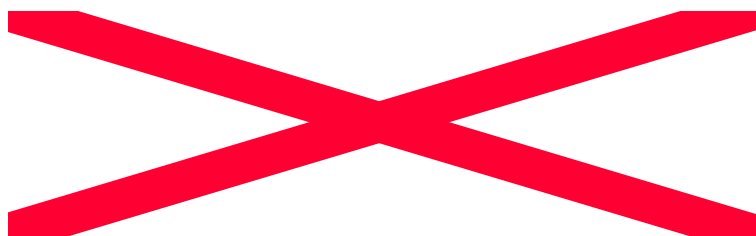
Country Pure Foods Today:

1. Headquartered in Akron, OH
2. Partnered with Blue Point Capital Partners, LLC
3. Largest supplier of portion juice to foodservice industry
4. Broad line of beverage products and packaging
5. Diverse supplier serving foodservice and retail
6. National supplier



Country Pure Foods Mission Statement:

By providing a work environment that emphasizes safety, quality, and collaboration, we will be a leading supplier of beverages in North America, delivering quality and innovative solutions to our customers, resulting in a winning culture that engages employees and maximizes the stakeholder value.





PRODUCT
CODE
SD167WS



TRY THE NEW
TACO

Pizza

Kickin' Kernels



Peanut Free



Tree Nut Free



Gluten Free



Great source
of antioxidants,
minerals, and
protein



High in
Vitamin E and B6

Aids in heart,
skin, and hair
health



KICKIN' KERNELS SUNFLOWER SEEDS

Salted Ingredients: Sunflower Kernels, Salt, Sunflower Oil
Unsalted Ingredients: Sunflower Kernels, Sunflower Oil



PRODUCT CODE	UNIT WEIGHT	PACKAGE TYPE	CASE COUNT	GTIN-14	CASE DIMENSIONS	CASE WEIGHT	CASES/PALLET	PALLET DIMENSIONS	PALLET WEIGHT	PALLET T/H
Salted Sunflower Seeds K01S	1 OZ.	POUCH	300	855325008565	10.875" H X 10" W X 16.750" L	21 LBS	60	69.25" H X 40" W X 48" L	1,282 LBS	T1 10 HI 6
Unsalted Sunflower Seeds K01UN	1 OZ.	POUCH	300	855325008572	10.875" H X 10" W X 16.750" L	21 LBS	60	69.25" H X 40" W X 48" L	1,282 LBS	T1 10 HI 6

APPLE & EVE®



100% JUICE

no sugar added*



ALL THE DELICIOUS GOODNESS OF REAL FRUIT



No added sugar



Excellent source of Vitamin C



No refrigeration required and 12-month shelf stability



Counts as ½ cup (125mL) of fruit at breakfast, lunch or after school snack

*Not a low-calorie food, please see label nutrition information for total calorie and sugar content.

Contact: 1.856.455.1000 ext. 7292





Apple & Eve Nutritional Information

Product Name	% Juice	Item Code	Serving Size	Calories per Serving	% DV-Vitamin C (per Serving)	Max Shelf-Life (non-refrigerated)	Type of Container	Units per Case
--------------	---------	-----------	--------------	----------------------	------------------------------	-----------------------------------	-------------------	----------------

Apple & Eve 125mL.

Apple Juice (U)	100%	86000TPFA	4.23 fl oz	60	70%	1 Year	Juice Box	40
Fruit Punch (U)	100%	86001TPFA	4.23 fl oz	60	70%	1 Year	Juice Box	40
Orange Tangerine (U)	100%	86003TPFA	4.23 fl oz	50	70%	1 Year	Juice Box	40
Strawberry Kiwi (U)	100%	86008TPFA	4.23 fl oz	50	70%	1 Year	Juice Box	40

Apple & Eve Packaging Specifications

	Pack Size	Block/Tier	Case Type Tray	Case Weight	Net Weight	Case Dimensions	Case Cube	Cases Per Pallet	Cases Per Truck	Pallets Per Truck
125 mL Brik Pk.	40-125mL	14 Block/10 Tier	Shrink Wrapped	12.8 lbs	10 lbs	14.62" L x 8.25" W x 3.62" H	0.253	140	3220	23





THE SWITCH is ON!

#1 selling sparkling
100% juice in U.S. Schools

A great tasting healthy
alternative to sodas and
sports drinks

Switch delivers healthy
profits to any ala carte
program



**New look,
same great taste!**

POP & GO



YOUR HEALTHY FREEZE POP!

- ✓ CREDITS AS ½ CUP REAL FRUIT JUICE
- ✓ COMPLIANT WITH USDA REIMBURSABLE MEAL PROGRAMS
- ✓ NO ARTIFICIAL COLORS, FLAVORS OR PRESERVATIVES
- ✓ NO SUGAR ADDED
- ✓ SHIP, STORED AND SOLD FROZEN
- ✓ SMART SNACK COMPLIANT
- ✓ GLUTEN FREE
- ✓ GOOD SOURCE OF VITAMIN C
- ✓ KOSHER
- ✓ 112 UNITS PER CASE



Product Flavors	SKU Number
Strawberry Kiwi	PGSK112
Cherry	PGCH112
Blue Raspberry	PGBR112
Sour Apple	PGSA112
Green Watermelon	PGGW112



SCAN ME

Contact your Barfresh Business Development Manager at info@barfresh.com or call 888-328-6170
 Distributed by Barfresh Corp, Inc., Los Angeles, CA 90010



Amazing Melt IN ANY APPLICATION



Bongards® Shredded Cheeses are perfect for pizzas, casseroles, salads, and much more!



Variety Across Your Menu

- ★ Both natural and process cheeses
- ★ Reduced fat options available
- ★ Consistent quality and performance
- ★ Available in multiple flavors

Product Code	Product Description	MMA/ Serving	Serving Size	Total Fat (g)	Sodium (g)	Calories (g)	Protein (g)	Commodity # per case	Pack Size	Net Weight (Lbs)	Shelf Life (Days)
755191	Yellow Cheddar Feather Shred	1	1 oz	9	180	110	6	20	4/5#	20	180
755711	Yellow Reduced Fat Cheddar Feather Shred	1	1 oz	6	180	90	8	20	4/5#	20	150
755811	Super Melt™ Yellow American Feather Shred	1	1 oz	9	350	100	6	15.39	4/5#	20	180
755961	Sharp Yellow Cheddar Feather Shred	1	1 oz	9	190	110	6	30	6/5#	30	180
755351	White American w/Hot Peppers Feather Shred	1	1 oz	8	380	100	5	14.42	4/5#	20	150
755071	LMPS Mozzarella Feather Shred	1	1 oz	5	180	80	6	20	4/5#	20	150
755361	Italian Blend Feather Shred	1	1 oz	6	210	90	7	20.33	4/5#	20	120
771021	Monterey Jack and Cheddar Fancy Shred	1	1 oz	9	170	110	7	20	4/5#	20	180

Submit a Product
Sample Request

Click [HERE](#) to view our
K-12 Virtual Tradeshow



Jill Ponder
Director of K-12 Sales
Jill.Ponder@Bongards.com
952-277-5582

For more information, visit
K12.Bongards.com



fruitHaven
A CHERRY CENTRAL BRAND



DRIED CHERRIES & CRANBERRIES

GLUTEN-FREE • NON-GMO • NUT FREE



CHERRIES

Nutrition Facts

1 serving per container
Serving size 1 package

Amount per serving
Calories 130

	% Daily Value
Total Fat 0g	0%
Saturated Fat 0g	0%
Trans Fat 0g	0%
Cholesterol 0mg	0%
Sodium 0mg	0%
Total Carbohydrate 31g	11%
Dietary Fiber 1g	4%
Total Sugars 27g	
Includes 10g Added Sugars	20%
Protein 1g	
Vitamin D 0mcg	0%
Calcium 12mg	0%
Iron 1mg	0%
Potassium 116mg	2%

*The % Daily Value tells you how much a nutrient in a serving of food contributes to a daily diet. 2,000 calories a day is used for general nutrition advice.

INGREDIENTS: DRIED CHERRIES, SUGAR, SUNFLOWER OIL.



0 70283 02137 5



SOUR BERRIES

Nutrition Facts

1 serving per container
Serving size 1 package

Amount per serving
Calories 120

	% Daily Value*
Total Fat 0g	0%
Saturated Fat 0g	0%
Trans Fat 0g	0%
Cholesterol 0mg	0%
Sodium 0mg	0%
Total Carbohydrate 33g	11%
Dietary Fiber 2g	7%
Total Sugars 24g	
Includes 11g Added Sugars	22%
Protein 0g	
Vitamin D 0mcg	0%
Calcium 8mg	0%
Iron 1mg	0%
Potassium 78mg	2%

*The % Daily Value (DV) tells you how much a nutrient in a serving of food contributes to a daily diet. 2,000 calories a day is used for general nutrition advice.

INGREDIENTS: DRIED CHERRIES, DRIED CRANBERRIES, SUCROSE, TARTARIC ACID, CITRIC ACID, NATURAL FLAVOR, AND SUNFLOWER OIL.



0 70283 49602 9



CRANBERRIES

Nutrition Facts

1 serving per container
Serving size 1 package

Amount per serving
Calories 120

	% Daily Value
Total Fat 0g	0%
Saturated Fat 0g	0%
Trans Fat 0g	0%
Cholesterol 0mg	0%
Sodium 0mg	0%
Total Carbohydrate 29g	11%
Dietary Fiber 2g	7%
Total Sugars 21g	
Includes 12g Added Sugars	24%
Protein 0g	0%
Vitamin D 0mcg	0%
Calcium 3mg	0%
Iron 0mg	0%
Potassium 37mg	0%

*The % Daily Value tells you how much a nutrient in a serving of food contributes to a daily diet. 2,000 calories a day is used for general nutrition advice.

INGREDIENTS: DRIED CRANBERRIES, SUCROSE, SUNFLOWER OIL.



0 70283 49568 8

SINGLE-SERVE • 1/2 CUP FRUIT EQUIVALENT

CherryCentral.com • 1-800-678-1860

EXPERIENCE THE COOL!

Shelf Stable • Individually Wrapped • Staff Friendly

FRUIT SLUSH
1/2 Cup of Fruit



FRUIT SLUSH
1/2 Cup of Fruit



VEGGIE EDGE JUICE
1/2 Cup of Veggie



VEGGIE EDGE SLUSH
1/2 Cup of Veggie



Scan QR Code for more on
The Cool Experience



800-510-8890
info@cool-tropics.com
www.cool-tropics.com



Smooth-Frozen SideKicks[™] For Schools

- 100% Fruit Juice
- Dairy Free
- No Preservatives
- Smooth-Frozen Texture
- Qualifies for Smart Snacks
- Does not contain bioengineered ingredients
- Lactose Free
- Gluten Free

**NEW
FLAVOR**



Orange-Cream 1/2 Cup Fruit Credit

- Orange-Cream is a classic blend of tangy orange paired with the sweetness of cream
- Contains no artificial colors or flavors

**NEW
FLAVOR**



Strawberry-Cream 1/2 Cup Fruit Credit

- Strawberry-Cream is a blend of juicy strawberries paired with the sweetness of cream
- Contains no artificial colors or flavors



BlueRaspberry-Lemon 1/2 Cup Fruit Credit

- BlueRaspberry-Lemon has a blend of tart and tangy lemon perfectly paired with the sweetness of raspberries
- Student favorite - increases daily participation!



Strawberry-Mango 1/2 Cup Fruit Credit

- Strawberry-Mango has a unique tropical blend which combines the sweetness of strawberries with the luscious, sweet taste of mango
- Contains no artificial colors or flavors



Kiwi-Strawberry 1/2 Cup Fruit Credit

- Kiwi-Strawberry has a burst of tropical kiwi flavor paired with the ever-popular sweetness of strawberries
- Popular selection for holiday treats and menus



SourCherry-Lemon 1/2 Cup Fruit Credit

- SourCherry-Lemon has a pop of sour cherry flavor with juicy lemon - not too tart, not too sweet
- Contains no artificial colors or flavors

Smooth-Frozen®
sideKicks™
Celebrations



DON'T BE FROSTRATED THIS SEASON, TRY 'JOLLY!'

100% Juice • No Added Sugars • Unique Smooth-Frozen Texture





DAVE'S BAKING

DAVE'S BAKING

Phone: 310.630.5873
Fax: 310.630.5865

Item Number	Description	Pack Size	Grain Servings	Item Number	Description	Pack Size	Grain Servings	Item Number	Description	Pack Size	Grain Servings
Whole Grain Muffins											
Muffins				Mini Muffins				Muffin Tops			
WG822	Apple Cinnamon	60	2	WG382	Apple Cinnamon	90	1	992	Apple	60	2
WG825	Chocolate Chip	60	2	WG385	Chocolate Chip	90	1	993	Blueberry	60	2
WG845	Double Chocolate	60	2	WG370	Double Chocolate	90	1	994	Orange Blossom	60	2
WG829	Blueberry	60	2	WG380	Blueberry	90	1	990	Chocolate Chip	60	2
WG828	Banana	60	2	WG381	Banana	90	1				
WG826	Corn	60	2	WG300	Corn	90	1				
				WG340	Orange	90	1				

Whole Grain Loaves & Bars											
Mini Loaves				Bars				Breakfast Bars			
WG5239	Blueberry	90	2	WG1111	Buttermilk Bar	72	2	4014	Apple	64	2/ 1/2 Cup fruit
WG5220	Z Bread (Zucchini)	90	2	WG1001	Twin Bar	72	2	4015	Blueberry	64	2/ 1/2 Cup fruit
5000	Corn Bread	64	2	2111	Plain Bar	144	1				
WG4002	Chocolate Chip	72	1	2122	Apple Bar	144	1				
WG239	Blueberry	72	1	2150	Limon Bar	144	1				
WG4004	Banana	72	1	WG1010	Limon Bar	72	2				
WG24	Apple	72	1								
WG4006	Carrot	72	1								
5150	Jalapeño Cornbread	64	2								

Whole Grain Miscellaneous											
Squares				Small Treats				Buns & Donuts			
325	Crumb Square	45	1	225	RF Chocolate Chip Brownie	72	1	FT1020	Apple Bun	72	2
360	Crumb Square	28	2	126	Brownie Cup	90	1/2	WG86	Carrot Bun	72	2
350	Banana Bread	28	2	150	Corn Superstar	128	1	FT600	Whole Wheat Cinnamon Bun	72	2
				260	Corn Superstar	90	2	FT452	Whole Wheat Round Donut	96	1.75
								FT450	Whole Wheat Round Donut	72	2

Non-Whole Grain Muffins											
Muffins				Egg and Cheese Frittata				NEW			
8229	Apple Cinnamon	60	2	5700	Plain Frittata	60	2				
8235	Chocolate Chip	60	2	5800	Red Pepper Frittata	60	2				
8495	Double Chocolate	60	2	5900	Corn Jalapeno Frittata	60	2				
8239	Blueberry	60	2								
8238	Banana	60	2								
8263	Corn	60	2								



HADLEY FARMS
Bakery

Hearty & Healthy Whole Grains



#375IW

36/2.7 OZ

Whole Grain
Cinnamon Roll, IW



#139

144/2.2 OZ

Whole Grain
Croissant

Nut-Free & Sesame-Free Facility 



@HadleyFarmsBakery
hadleyfarms.com

Jeri Thornton
Regional Sales Manager
Hadley Farms
jthornton@hadleyfarms.com





Gold Creek Presents

NEW Commodity
items for 24/25

Southern Gravy crunchers

791863



Cheezy Hotz

792405

Dill Fillet

792429



792405 Cheezy Hotz
-8/4lb 5 pc = 2 MMA; 1.5 GR

791863 Southern Gravy Cruncher
-8/4lb 4.80z = 2 MMA; 1.25 GR

792429 Dill Breast Fillet
-8/4lb 4oz fillet = 2 MMA; 1 GR



7180 - Fully Cooked
Grilled Breast Bites

Nutrition Facts

45 servings per container	
Serving size	(85g)
Amount Per Serving	
Calories	110
% Daily Value*	
Total Fat 3.5g	4%
Saturated Fat 0.5g	3%
Trans Fat 0g	
Cholesterol 50mg	17%
Sodium 740mg	32%
Total Carbohydrate 2g	1%
Dietary Fiber 0g	0%
Total Sugars 0g	
Includes 0g Added Sugars	0%
Protein 16g	32%
Vitamin D 0mcg	0%
Calcium 0mg	0%
Iron 0mg	0%
Potassium 282mg	6%

*The % Daily Value (DV) tells you how much a nutrient in a serving of food contributes to a daily diet. 2,000 calories a day is used for general nutrition advice.

Product Specifications

GTIN	00850055342316	Case Net Weight	10 pounds
Item UPC	85005342316	Case Dimensions	14.56 x 8.8 x 7.1
Shelf Life	365 days	Cube	0.53 cubic feet
Unit Size	2/5 pound bags	Ti x Hi	13 x 10 = 130 cs per pallet
Case Gross Weight	11 pounds	Servings	3.5 oz / 45 svgs. per case

Features & Benefits

- * Fully Cooked Grilled Breast Chunks
- * 5 - 0.70 oz pieces = 3.5 oz serving
- * Provides 2.0 oz M/Ma

Preparation & Cooking

Oven: Cook Approximately 12-15 min @ 400. *Please note: cooking times may vary based on equipment.*



7180

SEASONED FULLY COOKED GRILLED CHICKEN BITES

UNBREADED CHICKEN BREAST WITH RIB MEAT

INGREDIENTS: CHICKEN BREAST WITH RIB MEAT, WATER, SEASONING (FLAVOR [SALT, AUTOLYZED YEAST, YEAST, CHICKEN FAT, CHICKEN BROTH, NATURAL FLAVOR], BROWN SUGAR, FLAVORING, SPICES, SMOKED PAPRIKA, CITRIC ACID, MUSHROOM POWDER, DRIED LEMON PEEL POWDER, DEHYDRATED RED BELL PEPPER, NATURAL FLAVOR), CONTAINS 2% OR LESS OF MODIFIED FOOD STARCH, SODIUM BICARBONATE AND/OR POTASSIUM BICARBONATE, NATURAL FLAVOR, SODIUM PHOSPHATES, SOYBEAN OIL.

KEEP FROZEN

NET WT: 10 LBS (2/5 LB BAGS)



PACKED BY: GOLD CREEK FOODS, GAINESVILLE, GA 30504 PRODUCT OF USA

Jack Crawford, Director 7/24/2024

Specifications subject to changes, errors and omissions. 2255 White Sulphur Rd, Gainesville, GA 30501



8080 - Fully Cooked Grilled Chicken Breast Fillet

Nutrition Facts

53 servings per container	
Serving size	3 oz (85g)
Amount Per Serving	
Calories	100
<small>% Daily Value*</small>	
Total Fat 2g	3%
Saturated Fat 0g	0%
Trans Fat 0g	
Cholesterol 55mg	18%
Sodium 350mg	15%
Total Carbohydrate 1g	0%
Dietary Fiber 0g	0%
Total Sugars 0g	
Includes 0g Added Sugars	0%
Protein 18g	36%
Vitamin D 0mcg	0%
Calcium 78mg	6%
Iron 0mg	0%
Potassium 282mg	6%

*The % Daily Value (DV) tells you how much a nutrient in a serving of food contributes to a daily diet. 2,000 calories a day is used for general nutrition advice.

Product Specifications

GTIN	00858863007748	Case Net Weight	10 pounds
Item UPC	858863007748	Case Dimensions	14.56 x 8.8 x 7.1
Shelf Life	365 days	Cube	0.53 cubic feet
Unit Size	2/5 pound bags	Ti x Hi	13 x 10 = 130 cs per pallet
Case Gross Weight	11.1 pounds	Servings	3 oz / 53 svgs. per case

Features & Benefits

- * Fully Cooked Grilled Breast Fillet
- * 1 Fillet = 3 oz serving
- * Provides 2.0 oz M/Ma

Preparation & Cooking

Oven: Cook Approximately 12-20 min @ 375. Please note: cooking times may vary based on equipment.



8080

FULLY COOKED

GRILLED CHICKEN BREAST FILET

WITH RIB MEAT

INGREDIENTS: Chicken breast with rib meat, water, modified food starch, salt, sodium phosphate, spices

HEATING INSTRUCTIONS: Bake in sheet pan from 360F -376F for 12-20 minutes

NET WT: 10 LBS

PACKED BY
Gold Creek Foods Gainesville, GA 30504

Jack Crawford, Director 6/19/2024

Specifications subject to changes, errors and omissions. 2255 White Sulphur Rd., Gainesville, GA 30501





HIGH LINER
FOODSERVICE®

**CATCH THE FUN WITH
DELICIOUS FISH EVERY DAY!**

MEXI CALI BOWL WITH SOUTHERN CORNMEAL FISH STICKS

Product: 53989 Cornmeal Breaded
Pollock Fish Fries

Servings: 10

Prep Time: 15 minutes

Cooking Time: 12-18 minutes

Total Time: 33 minutes

**SEAFOOD
Not Just For Lent!**



Ingredients:

- 40 each Pollock Breaded Cornmeal Sticks
- 5 cup Brown Rice, fully cooked
- 2 1/2 cup Fire Roasted Corn, thawed
- 2 1/2 cup Black Beans, fully drained
- 2 1/2 cup Purple Cabbage
- 5 cup Iceberg Lettuce, shredded
- 10 oz Salsa, preferred brand

1. Prepare the Pollock Breaded Cornmeal Sticks according to their package instructions. **COOKING INSTRUCTIONS FROM FROZEN: TO DEEP FRY:** Deep Fry at 350°F for 3-4 minutes. **TO BAKE:** Place frozen fish fries on a lightly oiled baking pan. **CONVECTION OVEN:** Preheat oven to 375°F and bake for 8-12 minutes. **CONVENTIONAL OVEN:** Preheat oven to 400°F and bake for 15-20 minutes. **NOTE: COOK TO AN INTERNAL TEMPERATURE OF 155°F MINIMUM.**
2. While the fish sticks cook, warm the corn and black beans in medium sized pots over a medium setting.
3. To plate, serve 1/2 cup of fully cooked brown rice in the center of 10 bowls. Arrange 1/4 cup of black beans, corn and purple cabbage around the brown rice, followed by 1/2 cup of shredded iceberg lettuce.
4. Top the Mexi Cali Bowls with 4 fully cooked Cornmeal Breaded Fish Sticks and serve with a 1 oz ramekin of prepared salsa on the side.

DO SEAFOOD FEARLESSLY™

highlinerfoodservice.com

Bring Barbacoa to the Menu

Serve What They Love

New JENNIE-O® Turkey Barbacoa lets you emulate the Mexican favorite that your kids find at national chain restaurants. This on-trend protein even received a **96% approval rating** among students.¹



Turkey
Barbacoa
Tacos



K12

Big Brands on the Menu

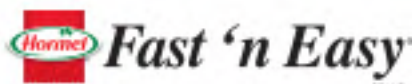
The leading foodservice brands are now available in schools! From breakfast to snacks to halal favorites, these K12-ready products help make it easy for students to eat well, explore foods and get excited about lunch.



PLANTERS



Fontanini



Get more product info and recipe ideas at hormelfoodservice.com



More Ways to Serve Your Kids



K-12



FOODSERVICE

Make the Most of Your White Pounds

Ideas for Every Last Bite

Take advantage of your entire JENNIE-O® diverted white turkey with products and meal ideas you can use on your menu.



Buffalo Turkey Wrap



Turkey Fettuccine Alfredo



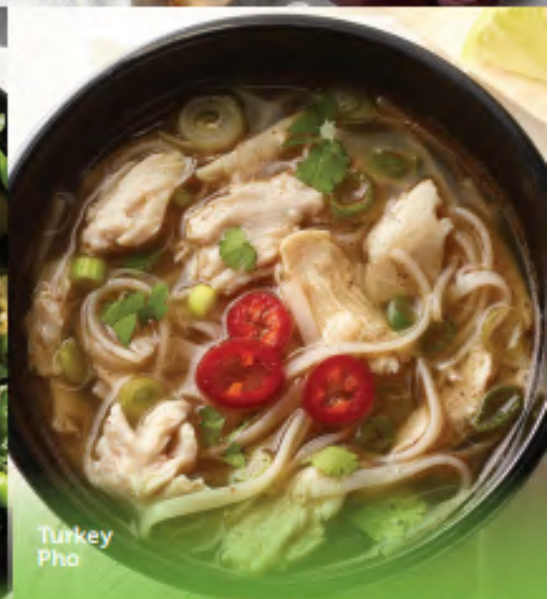
Seasoned Turkey Snack Stick



Turkey Sub



Turkey Protein Bowl



Turkey Pho





More for Your Menu

From handheld snack sticks to all natural* smoked coins, there are so many ways you can use up every pound of your JENNIE-O® diverted white turkey.

Product	Code	Meat Bank	M/MA (oz.)	Serving Size (oz.)	Total Cal (Kcal)	Total Fat (g)	Sat Fat (g)	Trans Fat (g)	Sodium (mg)	Protein (g)	Gluten	Allergens
Turkey Breast Sticks												
All Natural* Smokehouse Turkey Breast Sticks	207130	White	1	1.2	40	1	0	0	190	8	N	N
All Natural* Sweet BBQ Turkey Breast Sticks	207230	White	1	1.2	40	1	0	0	190	8	N	N
Pre-Sliced Sandwich Meats & Slicing Logs												
Sliced Oven Roasted Turkey Breast w/White Meat, .5 oz.	209903/ 209918	White	2	3	110	4.5	1	0	370	17	N	N
All Natural* Oven Roasted Sliced Turkey Breast	231812	White	2	2.92	90	1.5	.5	0	450	18	N	N
All Natural* Oven Roasted Sliced Turkey Breast	231818	White	2	3	90	1.5	.5	0	460	19	N	N
All Natural* Smoked Sliced Turkey Breast	231918	White	2	3	90	1.5	.5	0	450	20	N	N
All Natural* Smoked Turkey Breast 1.75" Coin	257412	White	1	1.65	50	1	.5	0	240	10	N	N
Oven Roasted Turkey Breast Slicing Log	813130	White	2	3.76	100	1.5	.5	0	510	19	N	N
Classic Boil-In-Bag												
Turkey & Gravy - All White FC	286228	White	2	4.16	120	4.5	1.5	0	520	18	N	N
Diced, Chunked, Shredded & Toppings												
Diced Turkey Breast, 1/2"	119376	White	2	3.92	90	1	.5	0	590	18	N	N
All Natural* Turkey Breast Strips	616920	White	2	2.58	80	1	.5	0	330	16	N	N
Chunked Breast w/White Turkey FC	644820	White	2	2.9	90	1.5	.5	0	460	17	N	N
Breasts, Roasts & Steaks												
Pre-Sliced Browned Turkey Breast Steak, 1.41 oz.	230324	White	2	2.82	80	1.5	.5	0	400	17	N	N
BLUE RIBBON Oven Roasted Turkey Breast - Reduced Sodium	836402	White	2	4	100	1	.5	0	580	19	N	N
NATURAL CHOICE** Tender Browned Turkey Breast	846902	White	2	2.7	90	1	.5	0	550	17	N	N
VIP Roasted Turkey Breast, Slice-N-Tact	878403	White	2	2.99	80	1	0	0	470	17	N	N

* All Natural* Allergens = *S* Soy

Name
Email
Phone

Get more product info and recipe ideas at jennieofoodservice.com/k12



Halal for All

Protein Alternatives for the Cafeteria

In today's schools, there are more kids than ever who aren't able to enjoy certain proteins in their meals. By offering halal options, you're giving every student—plus faculty and staff—a chance to have tasty alternatives in lunchtime favorites.



Taco Supreme with
JENNIE-O® Halal White & Dark
Turkey Taco Meat



Pepperoni Pizza with
HORMEL® Halal Pepperoni



FOODSERVICE



Looking for ways to **shake some sodium** out of your menus?



J.T.M.'s NEW Reduced-Sodium Cheese Sauces and Mac & Cheese products make it simple to serve up student favorites like nachos and pasta bowls without sacrificing quality or taste. Crafted with all the things you love like real cheddar cheese and whole-grain rich pasta, and without the things you don't, like phosphates and artificial flavors.



Mac & Cheese products have approximately **25% less sodium** than the original products.

CHEESE SAUCES:

- 5734 Premium R.S. Cheddar Cheese Sauce
- 5738 Premium R.S. Golden Hatch Queso
- 5741 Premium R.S. Alfredo Sauce
- 5742 Premium R.S. Queso Blanco
- 5744 Premium R.S. Jalapeño Cheese Sauce
- 5745 Premium R.S. Three Cheese Sauce

WGR MAC & CHEESE:

- 5743 Premium R.S. Three Cheese Cavatappi
- 5776 Premium R.S. Mac & Cheese (elbow)
- 5756 Signature R.S., R.F. Mac & Cheese (elbow)
- 5749 Premium R.S. Mac & Cheese (stick)

SEMOLINA MAC & CHEESE:

- 5757 Premium R.S. Mac & Cheese (elbow)
- 5758 Signature R.S., R.F. Mac & Cheese (elbow)
- 5759 Premium R.S. Mac & Cheese (stick)



Cheese Sauces have approximately **50% less sodium** than the original products.

To request samples, please contact:

Dave Hackman | davehackman@jtmfoodgroup.com | (513) 503-6047

Tom Hoenig | tom@synergyfoodsales.com | (636) 329-0700

John Pickert | john@synergyfoodsales.com | (816) 525-7800

Andy Dudenhoeffer | andyd@fairmarketinc.com | (573) 690-5026



WI 5Y 24-25 Info

Tamales

"See the difference –
Taste Our Success"®



99750
Two Cheese &
Green Chile
Tamale

99760
Chicken,
Salsa Verde &
Cheese
Tamale

99700
Shredded Beef,
Salsa Roja &
Cheese
Tamale

99780
Shredded Pork,
Salsa Roja &
Cheese
Tamale

Product Stock Code	Product Description & Meat/Meat Alternate/OZ EQV Grains	Size Ounce	Case Pack	Calories	Sodium (mg)	% Calories From Fat	% Calories From Sat Fat	% Sugar
LOS CABOS BRAND TAMALES – CN W/PAPER HUSK BULK PACKED								
99750	Two Cheese & Green Chile Tamale 2/2	5.10	60	344.53	711.45	47.05%	24.74%	1.09%
99760	Chicken, Salsa Verde & Cheese Tamale 2/2	5.75	60	308.56	621.88	40.13%	19.05%	0.85%
99770	Shredded Beef, Salsa Roja & Cheese Tamale 2/2	5.75	60	342.05	839.90	42.86%	20.21%	1.22%
99780	Shredded Pork, Salsa Roja & Cheese Tamale 2/2 PFS	5.75	60	331.54	806.16	41.91%	19.33%	1.23%
LOS CABOS BRAND TAMALES – CN W/PAPER HUSK IN PREPRINTED OVENABLE FILM								
99750	Two Cheese & Green Chile Tamale 2/2	5.10	60	344.53	711.45	47.05%	24.74%	1.09%
99760	Chicken, Salsa Verde & Cheese Tamale 2/2	5.75	60	308.56	621.88	40.13%	19.05%	0.85%
99770	Shredded Beef, Salsa Roja & Cheese Tamale 2/2	5.75	60	342.05	839.90	42.86%	20.21%	1.22%
99780	Shredded Pork, Salsa Roja & Cheese Tamale 2/2 PFS	5.75	60	331.54	806.16	41.91%	19.33%	1.23%

- CN Labeled
- Gluten Free
- Available Commodity Processed
- Synthetic Husk (Eco-Friendly)

Los Cabos Contact: Steve Turner - sturner@mcifoods.com



Signature Sauce BBQ

This is our Signature, classic vinegar based sauce. This sauce pairs perfectly with the hickory smoked pulled pork. The sauce acts as a natural tenderizer adding a distinctive flavor to the barbecue.



Traditional Red Sauce BBQ

This is a tomato based, red sauce that has a bold & sweet flavor. This is a traditional, western styled barbecue.



Semi-Dry BBQ

This is made from our Signature, vinegar based sauce, just a lighter version. It's perfect for those who enjoy less sauce in their barbecue and those that want to add their own sauce.

Made in Missouri!

Since 1947

- NO MSG
- Gluten Free Products Available
- Family Owned

FAMOUS

+

RANCH

+

HONEY
MUSTARD

+

CHIPOTLE
RANCH



FAMOUS FOR FLAVOR



DRESSINGS & SAUCES
WWW.OTTFOODS.COM

New! Naturally Balanced™ BBQ Sauce

- Delicious & Nutritious -



Look for the Leaf

Naturally Balanced™

Better Nutrition Made Simple™

- Tomato Puree FIRST ingredient
- Made with Sugar / No HFCS
- Enhanced Low Sodium Formula = 75% Less Than Other Leading Brands - 65mg / 1oz serving
- Made without Artificial Caramel Color Options
- Great Taste
- Commodity Processing Discounts Available



Texas BBQ Totchos

*Free pump available to order: RedGoldKetchupDispensers.com/shop/pump with discount code: BBQPUMP

RED GOLD. Nutritionally Enhanced™

Plant-Based Protein

Pasta Sauce

BOLOGNESE STYLE

Available November 2024

made with **PEA PROTEIN**



Nutritionally Enhanced™

- ✓ Reimbursable Meal Option
- ✓ 1 Cup Serving = 2 oz. Meat Alternate + 1¼ Cup Red/Orange Vegetable
- ✓ Unique Enhanced Low Sodium Formula: 1 Cup Serving = 420mg of Sodium
- ✓ Great Taste
- ✓ Commodity Processing Discounts Available on Tomato Paste
- ✓ Shelf Stable for 30 months

14g PROTEIN per 1 cup

Look for the Leaf

Nutritionally Enhanced™



For more information about our Red Gold Foodservice Products, contact:

Dan McCullough

Regional Sales Manager – Education / K12 Advisor
 ph: 816.920.1203 • e-mail: dmccullough@redgold.com



APPLE DIPPERS



& CARAMEL DIP INCLUDED

-  3oz Sliced Apples & 1oz Caramel Dip
-  Gluten and Nut-Free
-  Labor-free fruit equivalent & dessert in each bag!
-  Great for classroom parties!
-  Non-browning slices without compromising taste
-  Compliant with USDA's After-School Snack Program



Contact us at stefanie@rchlndhills.com • RichlandHillsFarms.com



Labor saving slices students LOVE to eat!



Pre-Sliced!
No Equipment
Needed!

We use an organic NatureSeal



USDA CODE
110149

Individually Wrapped Sliced Apples

Product Code	Package/ Size	Case Weight
SA100B	100 Clear Bag 2oz. Servings	12.50#
SA200	200 Logo Bag 2oz. Servings	25.00#
SA50	50 Clear Bag 2.4oz. Servings	7.5#
SA100	100 Logo Bag 2.4oz. Servings	15.00#

USDA NOI COMMODITY

Bulk Sliced Apples			
Product Code	Case Pack	Case Weight	Case Yield (2.4oz Servings)
SA10X1	(10) 1lb. Packs	10.00#	66
SA5X2	(5) 2lb. Packs	10.00#	66
SA2X10	(2) 10lb. Packs	20.00#	133
SA4X10	(4) 10lb. Packs	40.00#	266



Richland Hills Farms | Sunset Orchard
www.RichlandHillsFarms.com
 Stefanie Newell • (608) 697-0434 • stefanie@rchlndhills.com

ROCKIN'OLA

Rockin' Fiesta Bean Dip

Breakfast

- **Bean & Cheese Breakfast Taco:** Incorporate bean dip into a breakfast taco with scrambled eggs, cheese, salsa and a whole grain flour tortilla.
- **Bean & Egg Breakfast Bowl:** Top a bowl of scrambled eggs with bean dip, avocado, and fresh salsa. **GF**

Lunch

- **Stuffed Mini Peppers:** Fill halved mini bell peppers with bean dip and top with cheese. Bake or broil until the cheese is melted. **GF**
- **Bean & Cheese Burritos:** Use bean dip as a filling for burritos along with rice, cheese, and veggies. Roll up in a whole grain flour tortilla and serve with salsa and sour cream.
- **Bean & Cheese Tacos:** Spread bean dip on corn taco shells or corn tortilla and top with fillings such as lettuce, cheese, salsa, and avocado. **GF**
- **Bean & Cheese Tostada:** Top a tostada with bean dip and cheese and lettuce. **GF**
- **Vegan Bean Dip Salad:** Use bean dip as a base for a salad, adding ingredients like corn, black beans, and fresh greens. Drizzle with a light vinaigrette. **GF/V**
- **Bean Dip Double Protein Meal:** Serve a cup of bean dip with a side of Rivals Pea Protein Nacho Sticks. **GF/V**
- **Bean & Cheese Nachos:** Layer tortilla chips with bean dip, shredded cheese, and other toppings like jalapeños or olives. Bake until the cheese is melted. **GF**
- **Bean & Cheese Quesadillas:** Spread bean dip on a whole grain flour tortilla, add cheese and any other desired fillings, then top with another tortilla.
- **Bean & Cheese Stuffed Baked Potatoes:** Top baked potatoes with warm bean dip, cheese, green onions, and a dollop of sour cream. **GF**

Snack

- **Bean Dip Stuffed Avocados:** Fill avocado halves with bean dip for a quick and nutritious snack. **GF/V**
- **Bean Dip & Veggies:** Serve bean dip alongside an assortment of fresh veggies, for a colorful and healthy lunch or snack option. **GF/V**
- **Bean Dip with Tortilla Chips:** Serve you a cup of bean dip with a side of tortilla chips for a crowd-pleasing snack or lunch addition **GF/V**

GF Gluten Free

4902 Bean Dip Portion Cup 96/2.25oz

V

EXPLORE YOUR OPTIONS!
BREAKFAST, LUNCH
AND À LA CARTE

Tastybrands
EXPECT MORE

NEW

NEW



*IW Stuffed Maple
Pancake Sandwich*

*IW Chicken Sausage Patty
& Cheese on a Croissant*



*Buffalo Style
Chicken
Flatbread*



*Garlic Knots &
Stuffed Pastas*



*Garlic Cheesy
Twiz-Stiks*

NEW



*Hot Chocolate
Flavored Popcorn*

DON'T FORGET.
ALLOCATE YOUR
COMMODITY CHEESE!



EXPECT MORE

For more information contact
Amy Winters | 816-387-7071
awinters@tastybrandsk12.com
tastybrandsk12.com

Coming Soon!

Tasty Brands' annual
summer prebooking.

Forecast for
Summer '24 & save!

More details to follow!

Smart. Delicious. Choices.

The Amazing Chickpea School Food Service Lineup for 2024!

Spreads! 1 M/MA Peanut-Free, Tree Nut-Free, Vegan, Gluten-Free and Soy-Free 7 Great Flavors!



Sandwiches! 2 M/MA. 2 Grain, Peanut Free, Tree Nut Free, Dairy Free and Soy Free Vegan



Featuring! 15 lb. Pails of Our Most Popular Flavors



Contact Sunil Kumar: (612) 548-1099

k12support@theamazingchickpea.com

The Amazing Chickpea® LLC

9900 13th Ave. N. Suite #150 Plymouth, MN 55441

www.theamazingchickpea.com



New! Chickpea Granola Bars

1 GRAIN, 1/2 MMA, 1/8 C Legume, Peanut-free, Tree Nutfree,
Gluten-free, Shelf-Stable, Kosher

F9059 Apple-Cinnamon Chickpea Granola Snack Bar



INGREDIENTS: Apple Cinnamon Chickpea Spread (Roasted Chickpeas, Canola Oil, Sugar [Contains Cornstarch], Palm Oil, Cinnamon, Apple Powder, Natural Flavor [Organic Sunflower Oil, Natural Flavors, Vitamin E [D-Alpha Tocopherol]], Brown Rice Crisp (Whole Grain Brown Rice Flour), Whole Grain Oats, Brown Rice Syrup, Semi-Sweet Chocolate Chips (Sugar, Chocolate Liquor, Cocoa Butter, Soy Lecithin, Emulsifier), Vanilla), Salt.

Nutrition Facts Serving size: 1 Bar (39g). Amount per serving: **Calories 170**. Total Fat 6g (8% DV), Saturated Fat 1g (5% DV), Trans Fat 0g, Cholesterol 0mg (0% DV), Sodium 125mg (5% DV), Total Carbohydrate 25g (9% DV), Dietary Fiber 2g (7% DV), Total Sugars 6g (Includes 2g Added Sugars, 4% DV), Protein 4g, Vitamin D 0mcg (0% DV), Calcium 13mg (2% DV), Iron 1mg (5% DV), Potassium 140mg (2% DV). The % Daily Value (DV) tells you how much a nutrient in a serving of food contributes to a daily diet. 2,000 calories a day is used for general nutrition advice.

F9060 Chocolate+Chickpea Granola Snack Bar



INGREDIENTS: Chocolate Chickpea Spread (Roasted Chickpea, Canola Oil, Sugar [Contains Cornstarch], Pea Protein Isolate [Vegetable Pea Protein Isolated from Yellow Pea], Cocoa Powder, Palm Oil, Natural Flavor [Medium Chain Triglycerides, Natural Flavor], Brown Rice Crisp (Whole Grain Brown Rice Flour), Whole Grain Oats, Brown Rice Syrup, Semi-Sweet Chocolate Chips (Sugar, Chocolate Liquor, Cocoa Butter, Soy Lecithin [Emulsifier], Vanilla), Salt.

Nutrition Facts Serving size: 1 Bar (39g). Amount per serving: **Calories 170**. Total Fat 7g (9% DV), Saturated Fat 1g (5% DV), Trans Fat 0g, Cholesterol 0mg (0% DV), Sodium 95mg (4% DV), Total Carbohydrate 25g (9% DV), Dietary Fiber 2g (7% DV), Total Sugars 8g (Includes 5g Added Sugars, 10% DV), Protein 4g, Vitamin D 0mcg (0% DV), Calcium 12mg (0% DV), Iron 1mg (5% DV), Potassium 117mg (2% DV). The % Daily Value (DV) tells you how much a nutrient in a serving of food contributes to a daily diet. 2,000 calories a day is used for general nutrition advice.

Contact Sunil Kumar: (612) 548-1099
k12support@theamazingchickpea.com
The Amazing Chickpea® LLC
9900 13th Ave. N. Suite #150 Plymouth, MN 55441
www.theamazingchickpea.com





PreciPan™ + Fajitas = the perfect match

The start of a new school year is the perfect time to introduce fresh recipes, and the Vulcan PreciPan™ is here to help you make that happen. **PreciPan™ makes it easier to tackle the challenges of bulk cooking while adding exciting, healthy options to your menu.**

Check out our [latest blog](#) to see how the PreciPan™ makes cooking items like Tex-Mex Chicken Fajitas more efficient. We've also included a delicious recipe—curated in the Vulcan Test Kitchen—for you to try this school year.

Happy cooking!



Try this recipe for Tex-Mex Chicken Fajitas cooked in the Vulcan PreciPan™

Yield: 12,764 grams – approx. 56 servings

Ingredients:

20 pounds boneless, skinless chicken breast or thighs
 1 cup olive oil
 12 tablespoons lime juice
 12 cloves garlic, minced
 4 teaspoon ground cumin
 4 teaspoon smoked paprika
 4 teaspoon chili powder
 4 teaspoon ground coriander
 4 teaspoon salt
 2 teaspoon black pepper
 8 large onions, sliced
 16 bell peppers, sliced
 Cilantro, chopped, for garnish

Directions:

Preparation:

1. In a large mixing bowl, combine olive oil, lime juice, minced garlic, cumin, smoked paprika, chili powder, ground coriander, salt, and black pepper.
2. Add the chicken pieces to the marinade and toss to make sure it is well coated. Cover and let it marinate in the refrigerator for at least 30 minutes.

Cook:

1. Place PreciPan™ on Pan mode and click multi.
2. Preheat one zone to 375 degrees and the other zone to 325 degrees.
3. Add neutral oil to the entire cooking surface.
4. On the zone set to 375 degrees, add chicken make sure not to overcrowd. Cook for about 5-7 minutes or until the internal temperature reaches 165 degrees.



Unlock the flavor with these recipes



Korean Chicken



- 1 – 5# bag Yang's Breaded Chicken
- 3 T Minced Garlic
- 1 – 36 oz bag Yang's Mandarin Orange Sauce
- 6 T Gochujang (Korean fermented chili paste)
- Garnishes: green onion, cilantro

Cook chicken according to package directions. Mix Mandarin Orange Sauce with Gochujang and garlic. Heat gently in microwave or on the stove. Mix with cooked, hot chicken. Serve as part of rice or noodle bowl and garnish as desired.

Tropical Chicken



- 1 – 5# bag Yang's Teriyaki Chicken
- 1 – 32 oz bag Yang's Teriyaki Sauce
- 15 cups Frozen Mixed Bell Peppers
- 5 cups Frozen Onion
- 12 ½ cups Pineapple Chunks, drained

Preheat oven to 350* convection. Combine all ingredients, including chicken and sauce, in a hotel pan and bake, covered, for 30 minutes. Stir. Uncover and bake 30 minutes more. Raise heat to 400* convection and continue baking for another 20-30 minutes, or until sauce has reached desired consistency.

Meet the Chef



Andrew Terroez

Specialist Chef

Wichita Public Schools



**WICHITA
PUBLIC SCHOOLS**

Chef at Wichita SD Since: 2013

Family: Wife-Ashley , 4 children—Madelin (14), Gabriel (11), Teddy (8), Lucia (5) and several fur babies and other pets.

High School: Wichita East High School 2001

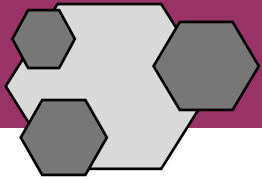
Favorite Famous Person: The Kelce Brothers

If you were in an eating competition, what could you eat the most of: Pickles

Where is the most interesting place you have traveled: Bermuda

Hobby or activity you are most passionate about: Anything that involves working with my hands.

If you were not a chef, what do you wish you would have been: a pilot or an author



Meet the Manufacturer

Manufacturer Rep. Since: 2011

Family: Wife—Kim, 2 Sons, Frank (18) and Joey (15), 2 Dogs, Roddi and Pauli

Favorite Famous Person: Sylvester Stallone



Name: Tom Markett

Title: Executive Director of Branded Food Service Sales

Manufacturer Name: Apple & Eve/



If you were in an eating competition, what could you eat the most of: Rainier Cherries

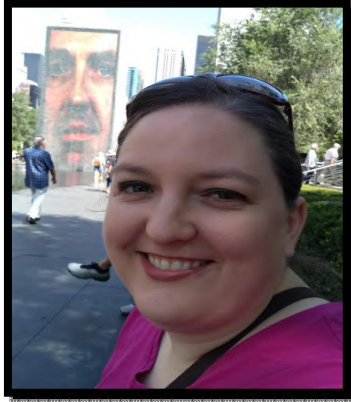
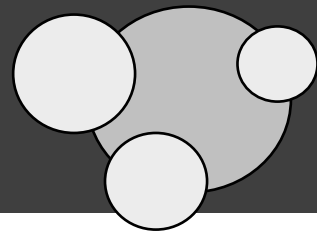
Hobby or activity you are most passionate about: I play football every Sunday morning from Labor Day weekend to Mother's Day in rain, snow or shine. I enjoy golfing during the summer, even though I'm not very good at it.

When/how did you get started in the food service business: My dad worked for Hunt Wesson for 32 years before retiring. Foodservice has been a part of my family since I was born. I started as a food broker in IL in 1999, which I did for 12 years before accepting a regional position with Apple & Eve.

If you were not a foodservice manufacturer, what do you think you would have been? General Manager of an NFL Team.



Meet the State



Ellen Reese

Food Distribution Manager

MO Department of Elementary and Secondary Education

State Office Employee Since: **2015**

Family: **Married and have a 17 year-old step daughter and a 10 year-old puppy.**

High School: **Spanish Fork H.S. (UT)**



Favorite Famous Person: Betty White

If you were in an eating competition, what could you eat the most of: Popcorn

Hobby or activity you are most passionate about: One of my hobbies is singing, and I sing in a women's barbershop chorus.

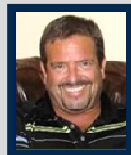
Where is the most interesting place you have visited: One of my favorite places is Bryce Canyon National Park. My grandma grew up in southern UT, and people would pay her to paint color onto their black and white photos of Bryce Canyon National Park, so I always think of her when I'm down there, too.

How did you get started in the foodservice business: I have a degree in Food Science, and then got a job in the food industry after graduating.

If you were not a State Employee, what do you wish you would have been? A medical imaging technician.



“Committed to Excellence”



John Pickert | Western Sales Director

222 NE Tudor Rd. | Lee's Summit, MO 64086

John@Synergyfoodsales.com | P: (816) 525.7800 x



Gary Bornmueller | Northern Sales Director

1618 48th Street | Des Moines, IA 50310

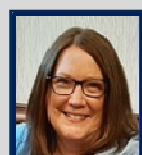
GaryB@Synergyfoodsales.com | P: (515) 371-9327



Tom Hoenig | Eastern Sales Director

122 Wimbledon Ct. | O'Fallon, MO 63368

Tom@Synergyfoodsales.com | P: (636) 329-0700



Kristine Bridgeman | Business Administrator

222 NE Tudor Rd. | Lee's Summit, MO 64086

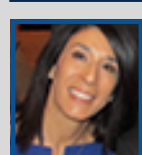
Kristine@Synergyfoodsales.com | P: (816) 525.7800 x 2



Andy Dudenhoeffer | Central Sales Director

4606 Hwy. 50 East | Linn, MO 65051

Andy@SynergyFoodSales.com | P: (573) 690-



Kim Lopez | Bid Coordinator

222 NE Tudor Rd. | Lee's Summit, MO 64086

Kim@SynergyFoodSales.com | P: (816) 525-7800 x 3



Sponsored By:



January 2024 Prize Puzzle Winners!

7th Place-\$25 Target Gift Card – Heather Boggio, Head Cook, Putnum County CUSD #535, Granville, IL.

6th Place-\$25 Target Gift Card—Kenny White, Resident Dietitian, Chartwells Parkway C-2, Chesterfield, MO.

5th Place-\$25 Target Gift Card—Donica Wagner, Food Service Director, Jefferson R-VII, Festus, MO.

4th Place-\$25 Target Gift Card—Teresa McAdams, Food Service Director, We-stran R-I, Huntsville, MO.

3rd Place-\$25 Target Gift Card—Debora Bohr, Food Service Director, St. Eliza-beth– Ann-Wichita, Wichita, KS.

2nd Place-\$25 Target Gift Card—Lindsay Salazar, Kitchen Manager, Lee’s Summit R-VII. Lee’s Summit, MO.

1st Place- \$50 Target Gift Card—Denise Santillan, Assistant Food Service Direc-tor, Joplin R-VIII, Joplin, MO.

Sponsored By:



1st Place: \$50.00 Target Gift Card

2nd—7th Place: \$25.00 Target Gift Card



Q1. Name the newest member of the Synergy Food Sales Team who resides in Iowa.

Q2. (True or False) - Alpha Foods now offers a taco pizza?

Q3. Name the 5 states that Synergy Foods Sales currently brokers food lines in.

Q4. Name the three new manufacturers that Synergy Food Sales started brokering this year

Q5. What two new products did The Amazing Chickpea release this summer?

Q6. How many WG Croissants are in a case of Hadley Farms #139?

Q7. What is the name of the newest product line released by Bar Fresh?

Q8. Which two state departments shared updates for their food distribution programs in this issue?

Q9: What does Mr. Tom Markett enjoy doing very Sunday from Labor Day through Mother’s Day every year?

Q10. Name the members of the Synergy Food Sales team.

Send quiz answers to Tom Hoenig at
Tom@SynergyFoodSales.com

Synergy Manufacturer's SY 24-25

Missouri & Kansas



Committed to Excellence

MO & KS



John Pickert
Western Sales Director
222 NE Tudor Road
Lee's Summit, MO 64086
john@synergyfoodsales.com
(816) 525-7800 x 1



Tom Hoenig
Eastern Sales Director
122 Wimbledon Court
O'Fallon, MO 63368
tom@synergyfoodsales.com
(636) 329-0700



Kristine Bridgeman
Business Administrator
222 NE Tudor Road
Lee's Summit, MO 64086
kristine@synergyfoodsales.com
(816) 525-7800 x 2



Andy Dudenhoeffer
Central Sales Director
4606 Hwy 50 East
Linn, MO 65051
andy@synergyfoodsales.com
(573) 690-5026



Kim Lopez
Bid Coordinator
222 NE Tudor Road
Lee's Summit, MO 64086
kim@synergyfoodsales.com
(816) 525-7800 x 3



Alpha Foods Co.
An industry leader in the field of manufacturing and distributing superior quality pizzas and pizza related products.



Apple and Eve & The Switch
Apple & Eve 100% juices are great for breakfast, lunch and after school snack programs, as well as field trips and other school events! The Switch is sparkling 100% juice. Perfect for a-la-carte, after school snack and field trips.



Amazing Fruit Products
United States produced line of tasty and healthy flavor infused dried fruit products that are smart snack compliant.



Bar Fresh
Producers of fresh blended frozen beverages. Offers a simple and profitable solution for healthy beverages with minimal labor and zero waste.



Bongards Premium Cheese
A farmer-owned co-op and producer of high quality natural and process cheeses, including blocks, slices, shreds and sticks.



Cherry Central
Manufacturer specializing in the growing, processing and marketing of fruit sauce and diced fruit cups.



Cool Tropics
A fruit and vegetable juice slush and fruit drink company. Cool Tropics uses 100% fruit and vegetable juices to make juice slushies that taste good and contribute towards fruit and vegetable credits.



Dave's Baking
Established in 1960. Offers quality, taste, unequalled nutritional contents, and a pledge to maintain product integrity.



Gold Creek
A family owned poultry company that strives to provide an array of Gold Standard products that kids will love to eat.



Hadley Farms Bakery
Hadley Farms bakes a full line of golden, layered Croissants and a wide selection of "just like homemade" Cinnamon rolls, Sweet rolls and Danish Pastries. Thaw and Serve.



High Liner Foods
Harvests, processes, distributes and markets a variety of Child Nutrition labeled seafood products from the United States.



Jennie-O Turkey Store/Hormel Foods
A complete line of CN labeled and commodity processed turkey items with many reduced caloric and reduced sodium options.



J.T.M. Food Group
Industry leader in the production of CN beef, pork, cheese & turkey entrees including soups and sauces all designed to be healthier, better tasting & nutritious.



M.C.I. Los Cabos
Producers of handmade frozen Mexican products including bulk and individually wrapped burritos, enchiladas and quesadillas for all meal segments.



Nicks Famous Bar-B-Q
Great tasting barbecue in Nashville for 30 years. With minimal ingredients, no fillers, our barbecue is high in protein, low in fat & will satisfy students.



Ott's
Missouri manufacturer of the highest quality dressings and sauces with famously unique taste and versatility.



Red Gold
Manufacturer of fine tomato products - ketchups, sauces, salsa and pastes that are nutritionally enhanced and designed to fit the school food service segment.



Richland Hills Farms
Processor of high quality refrigerated individually wrapped sliced apples.



Tarrier Foods/Rockin'ola
A 100% whole grain, low sodium treat packed with great flavor and is top 10 allergen free! These can be used as a snack or as a topping for parfaits and other treats. These, along with the corn crunch offer 1 and 2 grain healthy alternatives that kids love!



Tasty Brands
Great tasting child nutrition products featuring a wide array of menu options for breakfast, lunch, and dinner.



The Amazing Chickpea
A Unique spread made from select chickpeas using specialty roasting process for a roasted, nutty taste without any nuts.



Yang's 5th Taste
Manufacturers of cutting-edge, authentic Asian cuisine with an emphasis on nutrition, quality and delicious kid tested products.

Synergy Manufacturer's SY 24-25

Iowa & Nebraska



Committed to Excellence



Andy Dudenhoeffer
Central Sales Director
4606 Hwy. 50 East
Linn, MO 65051

andy@synergyfoodsales.com
(573) 690-5026



Tom Hoenig
Eastern Sales Director
122 Wimbledon Court
O'Fallon, MO 63368

tom@synergyfoodsales.com
(636) 329-0700



Gary Bornmueller
Northern Sales Director
1618 48th Street
Des Moines, IA 50310

garyb@synergyfoodsales.com
(515) 371-9327



Kim Lopez
Bid Coordinator
222 NE Tudor Road
Lee's Summit, MO 64086

kim@synergyfoodsales.com
(816) 525-7800 x 3

Iowa and Nebraska



Alpha Foods Co.

An industry leader in the field of manufacturing and distributing superior quality pizzas and pizza related products.



Cool Tropics

A fruit and vegetable juice slush and fruit drink company. Cool Tropics uses 100% fruit and vegetable juices to make juice slushies that taste good and contribute towards fruit and vegetable credits.



Country Pure Foods

Country Pure Foods offers a broad line of 100% fruit and vegetable juice portions to meet your menu planning needs. These options include frozen cups, cartons and shelf-stable boxes. All these juices qualify for Smart Snacks.



Dave's Baking

Established in 1960. Offers quality, taste, unequalled nutritional contents, and a pledge to maintain product integrity.



Gold Creek

A family owned poultry company that strives to provide an array of Gold Standard products that kids will love to eat.



Hadley Farms Bakery

Hadley Farms bakes a full line of golden, layered Croissants and a wide selection of "just like homemade" Cinnamon rolls, Sweet rolls and Danish Pastries. Thaw and Serve.



Nicks Famous Bar-B-Q

Great tasting barbecue in Nashville for 30 years. With minimal ingredients, no fillers, our barbecue is high in protein, low in fat & will satisfy students.



Tarrier Foods/Rockin'ola

A 100% whole grain, low sodium treat packed with great flavor and is top 10 allergen free! These can be used as a snack or as a topping for parfaits and other treats. These, along with the corn crunch offer 1 and 2 grain healthy alternatives that kids love!



Tasty Brands

Great tasting child nutrition products featuring a wide array of menu options for breakfast, lunch, and dinner.



The Amazing Chickpea

A Unique spread made from select chickpeas using specialty roasting process for a roasted, nutty taste without any nuts.

Synergy Manufacturer's SY 24-25

Illinois



Committed to Excellence

Illinois



John Pickert
Western Sales Director
222 NE Tudor Road
Lee's Summit, MO 64086
john@synergyfoodsales.com
(816) 525-7800 x 1



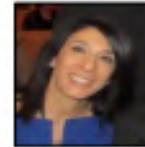
Tom Hoenig
Eastern Sales Director
122 Wimbledon Court
O'Fallon, MO 63368
tom@synergyfoodsales.com
(636) 329-0700



Kristine Bridgeman
Business Administrator
222 NE Tudor Road
Lee's Summit, MO 64086
kristine@synergyfoodsales.com
(816) 525-7800 x 2



Andy Dudenhoeffer
Central Sales Director
4606 Hwy 50 East
Linn, MO 65051
andy@synergyfoodsales.com
(573) 690-5026



Kim Lopez
Bid Coordinator
222 NE Tudor Road
Lee's Summit, MO 64086
kim@synergyfoodsales.com
(816) 525-7800 x 3



Alpha Foods Co.
An industry leader in the field of manufacturing and distributing superior quality pizzas and pizza related products.



Apple and Eve & The Switch
Apple & Eve 100% juices are great for breakfast, lunch and after school snack programs, as well as field trips and other school events! The Switch is sparkling 100% juice. Perfect for a-la-carte, after school snack and field trips.



Amazing Fruit Products
United States produced line of tasty and healthy flavor infused dried fruit products that are smart snack compliant.



Bongards Premium Cheese
A farmer-owned co-op and producer of high quality natural and process cheeses, including blocks, slices, shreds and sticks.



Cool Tropics
A fruit and vegetable juice slush and fruit drink company. Cool Tropics uses 100% fruit and vegetable juices to make juice slushies that taste good and contribute towards fruit and vegetable credits.



Dave's Baking
Established in 1960. Offers quality, taste, unequalled nutritional contents, and a pledge to maintain product integrity.



Gold Creek
A family owned poultry company that strives to provide an array of Gold Standard products that kids will love to eat.



Hadley Farms Bakery
Hadley Farms bakes a full line of golden, layered Croissants and a wide selection of "just like homemade" Cinnamon rolls, Sweet rolls and Danish Pastries. Thaw and Serve.



Jennie-O Turkey Store/Hormel Foods
A complete line of CN labeled and commodity processed turkey items with many reduced calorie and reduced sodium options.



JTM Food Group
Industry leader in the production of CN beef, pork, cheese & turkey entrees including soups and sauces all designed to be healthier, better tasting & nutritious.



M.C.I. Los Cabos
Producers of handmade frozen Mexican products including bulk and individually wrapped burritos, enchiladas and quesadillas for all meal segments.



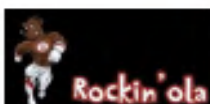
Nicks Famous Bar-B-Q
Great tasting barbecue in Nashville for 30 years. With minimal ingredients, no fillers, our barbecue is high in protein, low in fat & will satisfy students.



Red Gold
Manufacturer of fine tomato products - ketchups, sauces, salsa and pastes that are nutritionally enhanced and designed to fit the school food service segment.



Richland Hills Farms
Processor of high quality refrigerated individually wrapped sliced apples.



Tarrier Foods/Rockin'ola
A 100% whole grain, low sodium treat packed with great flavor and is top 10 allergen free! These can be used as a snack or as a topping for parfaits and other treats. These, along with the corn crunch offer 1 and 2 grain healthy alternatives that kids love!



Tasty Brands
Great tasting child nutrition products featuring a wide array of menu options for breakfast, lunch, and dinner.



The Amazing Chickpea
A Unique spread made from select chickpeas using specialty roasting process for a roasted, nutty taste without any nuts.



Yang's 5th Taste
Manufacturers of cutting-edge, authentic Asian cuisine with an emphasis on nutrition, quality and delicious kid tested products.